



**DURABLE, RESILIENT &
VERSATILE
MARKING SYSTEMS**



About ALTECO-LINE

Alteco-Line is a leading range of Polymethyl Methacrylate (PMMA) and Epoxy (EP) cold liquid plastics. Our high quality and long-lasting marking systems provide solutions for roads, motorways, rail, cities, factories, parking decks, walkways, airports and more.

We deliver solutions worldwide from our manufacturing base in Twistringen, Germany, where we have more than 35 years of experience in speciality coatings and markings.

Product reliability, first-class customer service are our main values.



Why Choose ALTECO-LINE

Our systems are tested by the German Federal Highway Research Institute (BAST) and guarantee maximum road safety.



Experience

We have more than 35 years' experience in the field of specialist coatings and markings.



Quality Products

Our products are tested for superior performance and durability.



Values

Product reliability, first class customer service & innovation are our core values.



Technology

Our systems exhibit rapid curing time even in extreme temperatures and are rain resistant in 30 minutes.



**KNOWLEDGE
INNOVATION
TRUST**

Comox-Helmcken Greenway, Vancouver, Canada

Performance Characteristics

of Alteco-Line Systems

1 Properties

Our systems are characterised by their high mechanical strength, long service life and resistance to contamination.

2 Manufacturing

We manufacture one cold plastic product for several different application methods.

3 Quality

Production as per the standards defined in DIN ISO 9001 guarantees consistent levels of quality.

4 Versatile Systems

You can also use the Alteco-Line markings to give set-down areas, walkways and vehicle routes a clear structure.



Market Sectors



Motorways & Roads



Cycleways



Rail



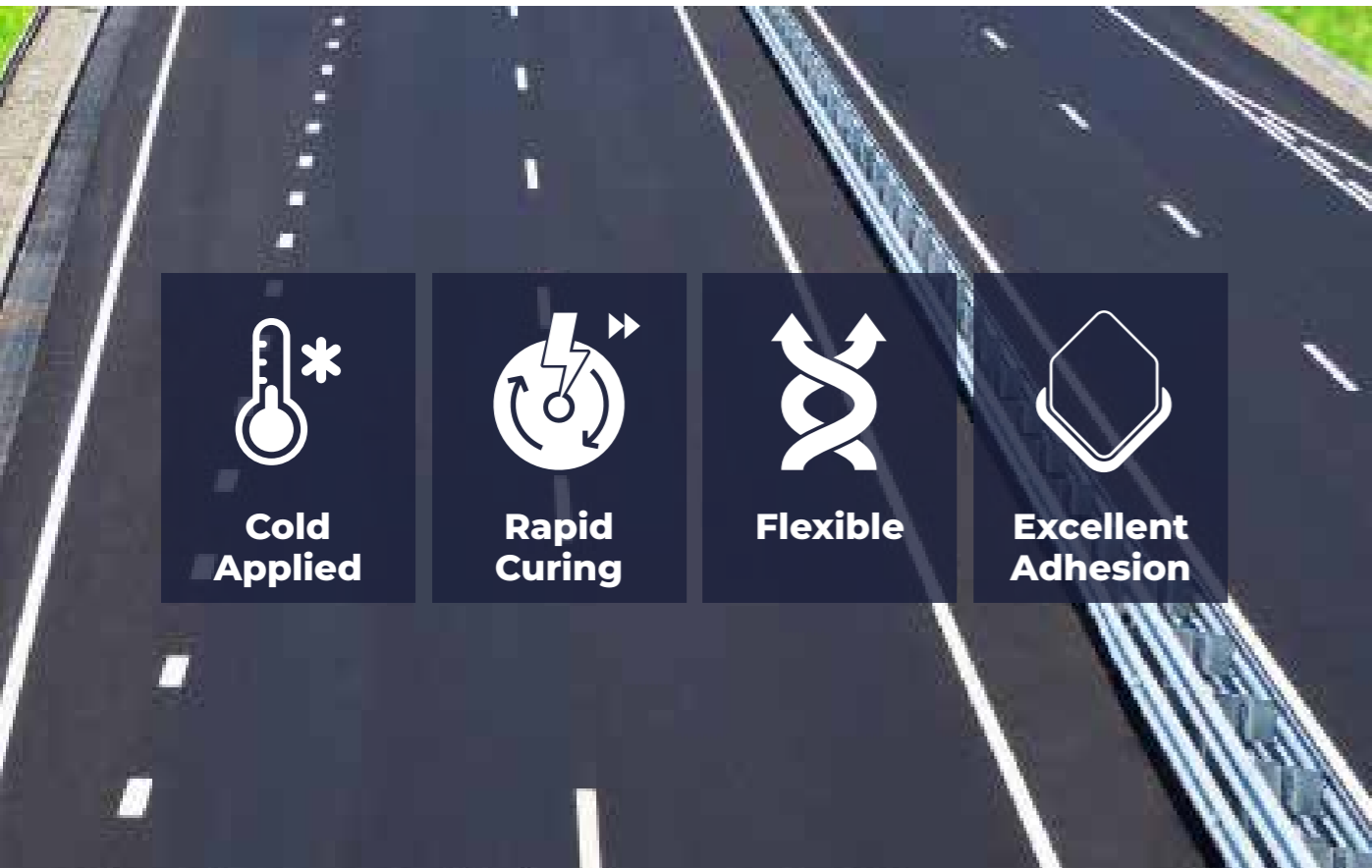
Car Parks



Walkways



Playgrounds & Parks



Alteco-Line RP-2K

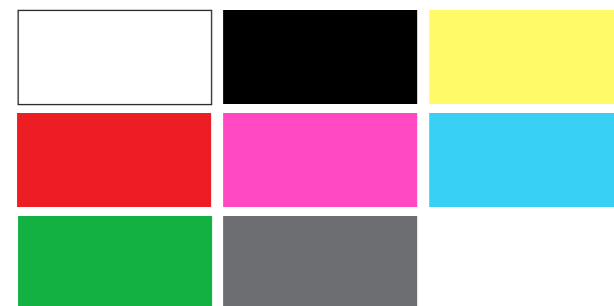
Type 1 and Type 2 Polymethyl Methacrylate (PMMA) marking system in accordance with CE-EN 187.

Description

Line markings for **HIGH VOLUME** traffic areas. Alteco-Line RP-2K is a 2-component; solvent free polymethyl methacrylate (PMMA) resin based coating system. It can be applied in the form of closed-finish line marking, agglomerates or profile and is ideal for roads with high traffic volumes and areas where clear road visibility at night is essential.

Colour Range

*More colours available upon request



Areas of use

Motorways, A-Roads, Temporary Signs or Bespoke Patterns

Additional Benefits

Extremely tough and durable, Weather resistant (UV & IR stable), Alkali resistant, BAST tested for performance.



Alteco-Line 100 2K-EP

A Type 1 and Type 2 thin-layer, low-solvent, high-solid epoxy (EP) resin based coating system in accordance with CE-EN 1871.

Description

Decorative Markings for **HIGH VOLUME** traffic areas. Alteco-Line 100 2K-EP is a spray-applied road marking system for use on damp asphalt or concrete surfaces. The highly resistant system can even be used in wet conditions.

Colour Range

*More colours available upon request

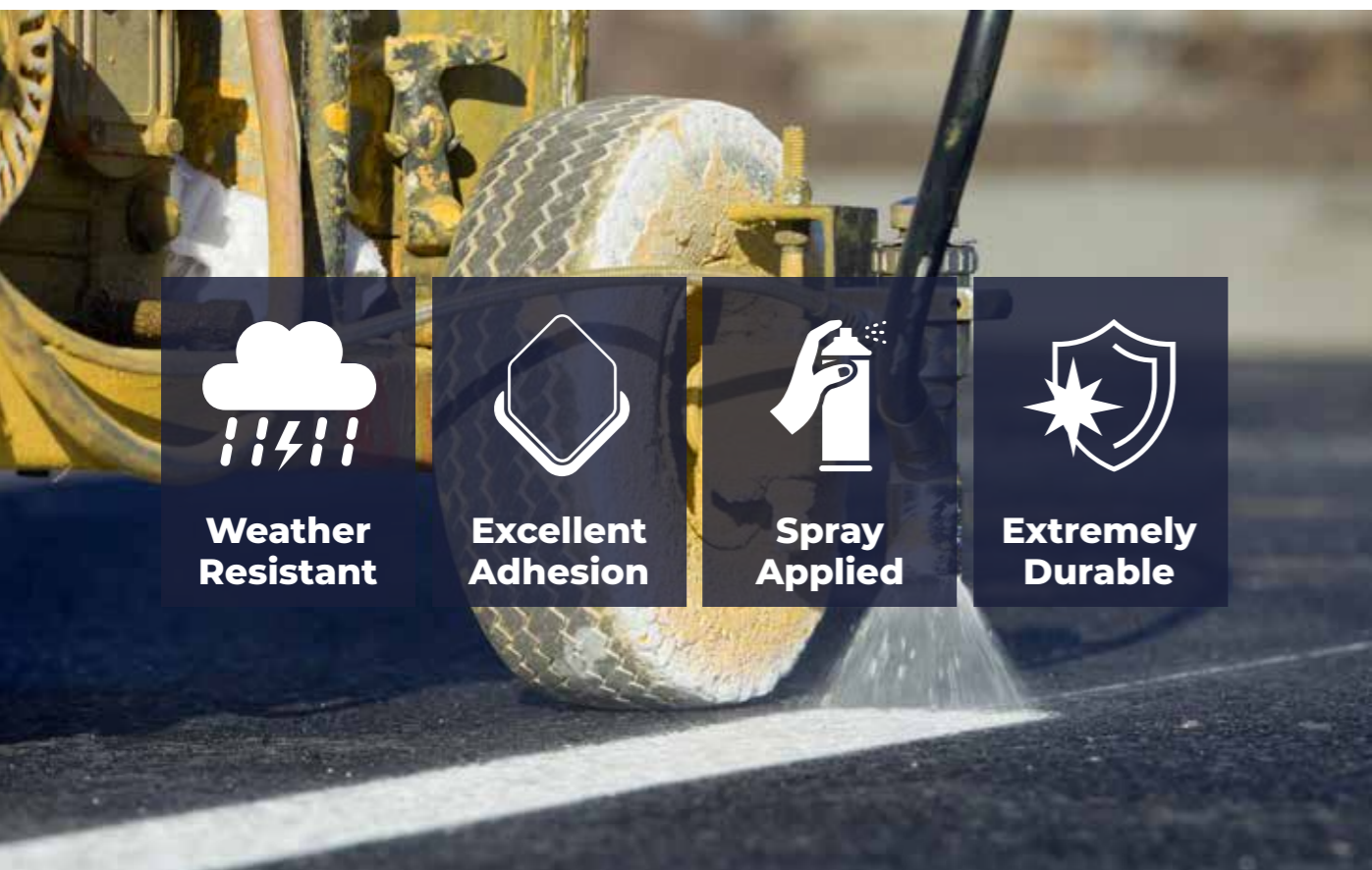


Areas of use

Motorways, Main Roads or Ring Roads

Additional Benefits

Complete surface adhesion, Oil and petrol resistant, Alkali resistant, Rapid curing, BAST tested for performance.



Alteco-Line KSP-2K/3K

A Type 1 and Type 2 spray-applied marking system to create closed-finish, thin layer markings in accordance with CE-EN 187.

■ Description

Line markings for **LOW VOLUME** traffic areas.

Alteco-Line KSP 2k/3k is ideal for marking roads with low volumes of traffic, such as rural roads and streets in residential areas. As the product is rapid curing, it is suitable for undercoats on roads with high traffic volumes or for refreshing agglomerates. In many cases the road can be reopened to vehicular traffic in less than 10-15 minutes.

■ Colour Range

*More colours available upon request



■ Areas of use

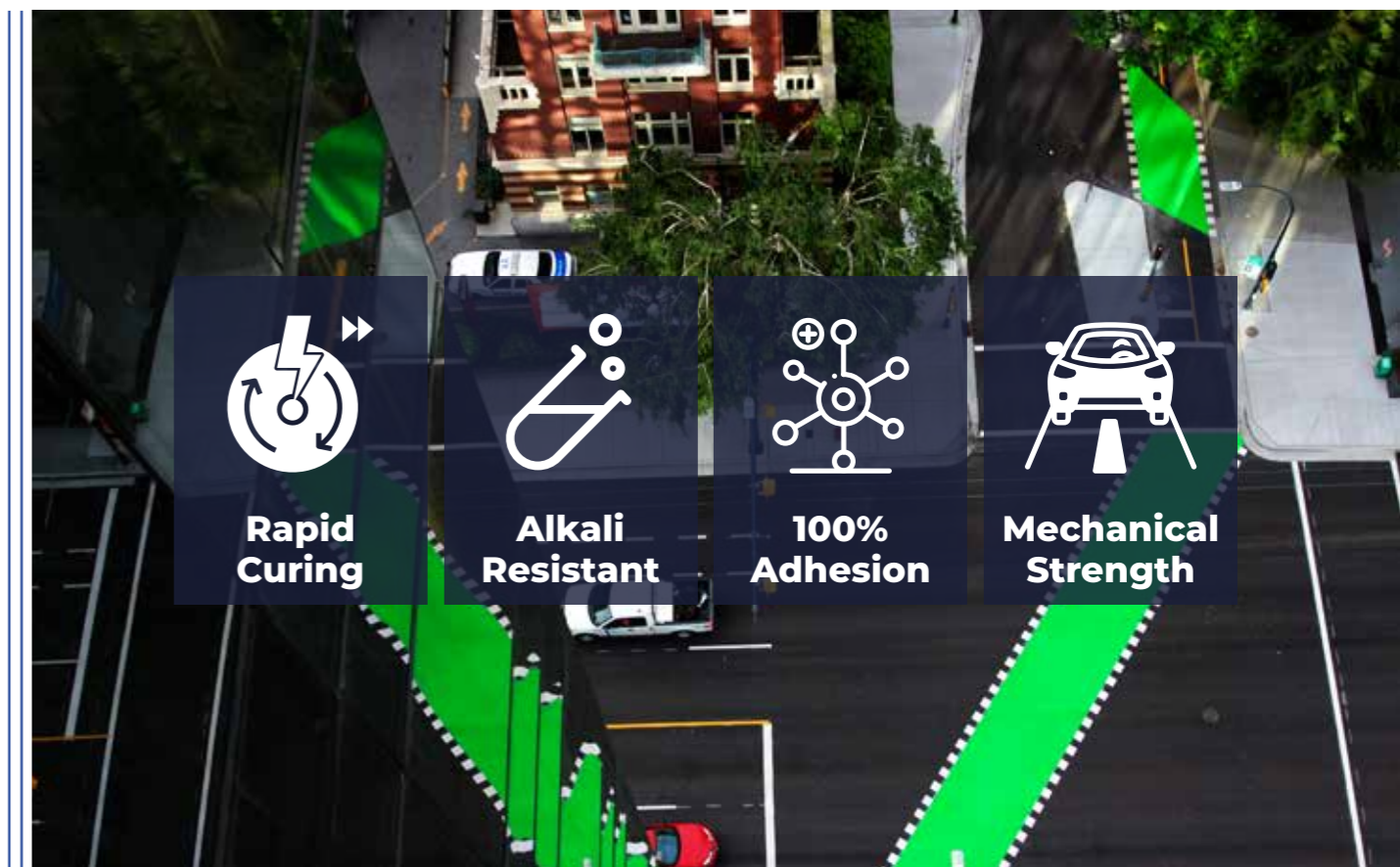
Residential Areas, Rural Roads, Urban Areas, Undercoats on roads or Refreshing agglomerates

■ Additional Benefits

Cold applied, Rapid curing, Flexible, Extremely tough, BAST tested for performance



Alteco-Line marking systems stand out thanks to their rapid drying time. Regardless of the traffic volumes, the sprayable materials are an excellent solution.



Alteco-Line MR-2K

A non-slip and highly textured coating system for cities, cycle paths and parks.

■ Description

Alteco-Line MR-2K is completely elastic and a non-slip surface which cures in less than 10-15 minutes. Alteco-Line MR-2K is a 2-component, roller-applied polymethyl methacrylate (PMMA) based resin coatings system.

■ Colour Range

*More colours available upon request



■ Areas of use

Cycle Paths, Parks, Town Centres & Cities, Architectural Areas or Helicopter Platforms

■ Additional Benefits

Abrasion Resistant, Extremely tough and durable, Oil and petrol resistant, BAST tested for performance.

More than 100 colours are available for designs in cycle paths, parks and pedestrianised areas, where they provide optimal guidance and safety. You can also use the Alteco-Line markings to give set-down areas, walkways and vehicle routes a clear structure.



Alteco-Line Bike Route

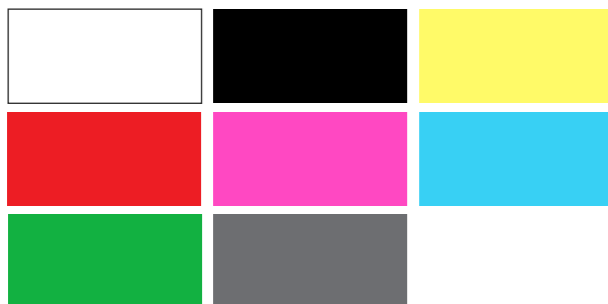
Decorative & High Performance Marking Systems for Cycle Ways.

Description

Alteco-Line Bike Route cold plastic is a coloured cold-curing reactive coating material in accordance with CEN-EN 1871 Standards. Highly reactive and fast-curing marking products: ready for vehicle traffic without delay, short closure periods, resulting in reduced risk of congestion.

Colour Range

*More colours available upon request



Areas of use

Cycle Paths, Parks, Town Centres & Cities, Architectural Areas or Helicopter Platforms.

Additional Benefits

Excellent adhesion to substrate, Rapid curing, Extremely tough and durable, Weather resistant,

LUMINOUS CYCLE PATH SYSTEM: A new concept and system to create luminous cycle paths. The illuminated coating is a 2-component, cold-curing, reactive coating according to CEN-EN 1871 with glass.

Alteco-Line 1K Paint

A thin-layer coating system for outdoor applications including parking structures and walkways.

Description

Alteco-Line 1K Marking Paint, is a resin based coating system for use on asphalt and concrete substrates. Highly reactive and fast-curing marking products: ready for vehicle traffic without delay, short closure periods, resulting in reduced risk of congestion.

Colour Range

*More colours available upon request



Areas of use

Car Parks, Walkways, Airports, Halls & Exhibition Centres or Factories

Additional Benefits

Rapid curing, Decorative, Excellent mechanical strength, Resistant to medium shear forces,

Our systems are characterised by their high mechanical strength, long service life and resistance to contamination. Manufactured as per the standards defined in DIN ISO 9001 guarantees consistent levels of quality.

About USL Speciality Products

USL Speciality Products manufacturer and supply specialist construction products to support, preserve and enhance critical Infrastructure assets, specifically in the Bridge, Rail, Utilities, Offshore, Power and General Construction market spaces. Our products are supplied to fully trained specialist contractors who deliver complex infrastructure projects to strict quality, budget and time constraints.

Our brands are trusted to deliver excellence:



DDA Surface Mounted Tactile Paving - Visul Systems.

Our Product Categories

-  **Structural Waterproofing**
-  **Structural Bearings**
-  **Line Markings**
-  **GRP Grating, Access Platforms and fencing**
-  **Resin Injection**
-  **Pipe Rehabilitation**
-  **Mechanical Expansion Joints**
-  **Bridge Deck Drainage**
-  **Concrete Repairs**
-  **Surface Mounted Tactile Paving**
-  **Ironwork Reinstatement Products**

WE ARE...



WWW.USLSP.COM



Contact Us

Head Office

Kingston House, 3 Walton Road
Pattinson North, Washington
Tyne & Wear, NE38 8QA UK

t: +44(0)191 416 8360
e: info@alteco-line.com

European Office

Raiffeisenstrasse 16,
27239 Twistringen, Germany

t: +49 (0)4243 92950
e: info@alteco-line.com

A  SPECIALITY PRODUCTS Brand